

MARCATURA, TRACCIATURA MARKING, TRACING

PIANI DI RISCONTRO / SURFACE PLATES

In ghisa G26 UNI 668 a struttura compatta, superfici di lavoro rettificate e raschiettate.

Made of cast iron G26 UNI 668, compact structure, ground and scraped work tops.

ART. 278

PRECISIONE SECONDO NORME DIN 876/I ACCURACY ACCORDING TO DIN 876/I						
CODE		04	05	06	07	08
Dimensioni Dimensions	mm	250x250	300x300	300x400	300x500	400x500
CODE		09	10	11	12	13
Dimensioni Dimensions	mm	400x600	500x600	500x800	600x800	700x1000
CODE		14	15	16	17	18
Dimensioni Dimensions	mm	1000x1000	1000x1500	1000x2000	1500x2000	1500x2500

Per le misure non elencate richiedere preventivo / For size not listed, ask for a quote



ART. 279

PRECISIONE SECONDO NORME DIN 876/II ACCURACY ACCORDING TO DIN 876/II						
CODE		04	05	06	07	08
Dimensioni Dimensions	mm	250x250	300x300	300x400	300x500	400x500
CODE		09	10	11	12	13
Dimensioni Dimensions	mm	400x600	500x600	500x800	600x800	700x1000
CODE		14	15	16	17	18
Dimensioni Dimensions	mm	1000x1000	1000x1500	1000x2000	1500x2000	1500x2500

Per le misure non elencate richiedere preventivo / For size not listed, ask for a quote

PIANI PER TRACCIATORI / MARKING SURFACE PLATES

ART. 285

In ghisa G26 UNI 668 a struttura compatta.

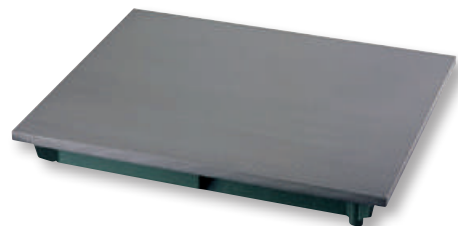
Made of cast iron G26 UNI 668, compact structure

CODE		01	02	03	04
Dimensioni Dimensions	mm	300x400	300x500	400x500	400x600
CODE		05	06	07	08
Dimensioni Dimensions	mm	500x600	500x800	600x800	700x1000
CODE		09	10	11	
Dimensioni Dimensions	mm	1000x1000	1000x1500	1000x2000	

Precisione secondo norme DIN 876/III parte 2ª.

Per le misure non elencate richiedere preventivo.

Accuracy according to: DIN 876/II. For size not listed, ask for a quote.



COLONNE DI SOSTEGNO IN GHISA G22 PER PIANI DI RISCONTRO SUPPORTING FEET MADE OF CAST IRON G22 FOR SURFACE PLATES

ART. 285

CODE	Dimensioni Dimensions mm	Viti Screws
60	700x830	1
61	520x600	1
62	520x640	2



NEW